

FINISHES

AF - ALUMINIUM FRAMED SLIDING WINDOWS - WOODLAND GREY
AFA - ALUMINIUM FRAMED AWINING WINDOWS - WOODLAND GREY
AFL – ALUMINIUM FRAMED LOUVRES – WOODLAND GREY
AFSD - ALUMINIUM FRAMED SLIDING DOORS - WOODLAND GREY

TR - CONCRETE TILED ROOF - BORAL LINEA CHARCOAL GREY OXIDE
CL - KLIPLOCK 700 HS WALL - WOODLAND GREY
TF - NATURAL TIMBER FINISH - WEATHERTEX

PF1 - PAINT FINISH BROADWALL, DP'S AND AC SHEETING - LIGHT GREY
PF2 - PAINT FINISH AC SHEETING AND PORCHE COCHRE SUPPORT POLE - ORANGE
PF3 - PAINT FINISH FASCIA BOARD AND GUTTER - CHARCOAL GREY
PF 4 – PAINT FINISH TO SURROUND - WHITE

B1 - POST AND RAIL/GLASS PANEL BALUSTRADE - LIGHT GREY

CONSTRUCTION NOTES

GROUND & LOWER GROUND FLOORS TO BE CONCRETE WITH "AFS" WALLS OR SIMILAR TO GROUND FLOOR ONLY. UPPER FLOOR TO BE STEEL FRAME CONSTRUCTION WITH HEBEL EXTERNAL PANELS WITH GYPROCK LINED HEBEL INTERNAL WALLS. STEELFRAMED ROOF TO WITH BORAL "LINEA" OXIDE THRU CONCRETE TILE AND GYPROCK LINED CEILING. REFER TO ENGINEERS DETAIL FOR STRUCTURAL AND ENERGY & SUSTAINABILITY PERFORMANCE CRITERIA.

CONSTRUCTION NOTES - POOL

POOL TO BE STANDARD CONCRETE CONSTRUCTION TO ENG DETAILS WITH PERIMETER STRUCTURE OVER 100 SQ. COLUMNS TO HOUSE ADJUSTABLE PERGOLA

. PULL DOWN ZIP UP SIDES WILL FACILITATE ALL WEATHER CONDITIONS.

A	09.05.2017	DEVELOPMENT APPLICATION SET
NO.	DATE:	DETAILS:

Amendments:

Stephen Jones Associates

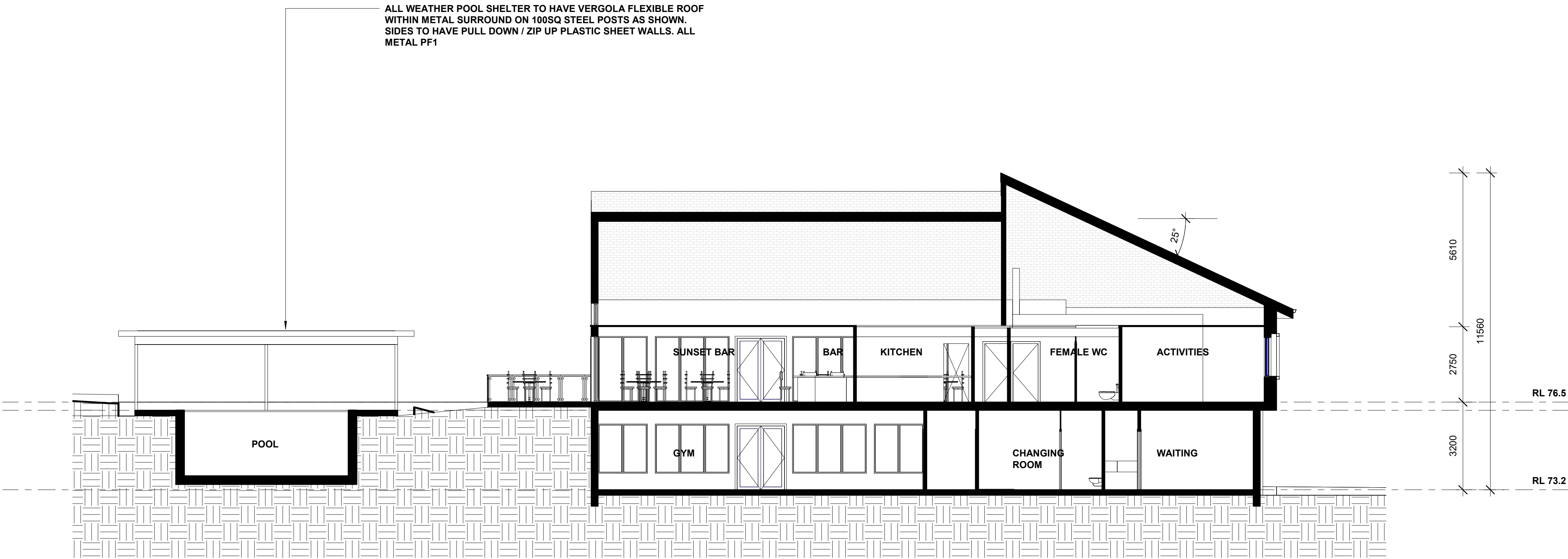
p. 02 9977 2240
m. 0418 866 784
e. sj@stephenjonesassociates.com
w. www.stephenjonesassociates.com

Registered Architect Gary Finn No. 5774 (NSW)

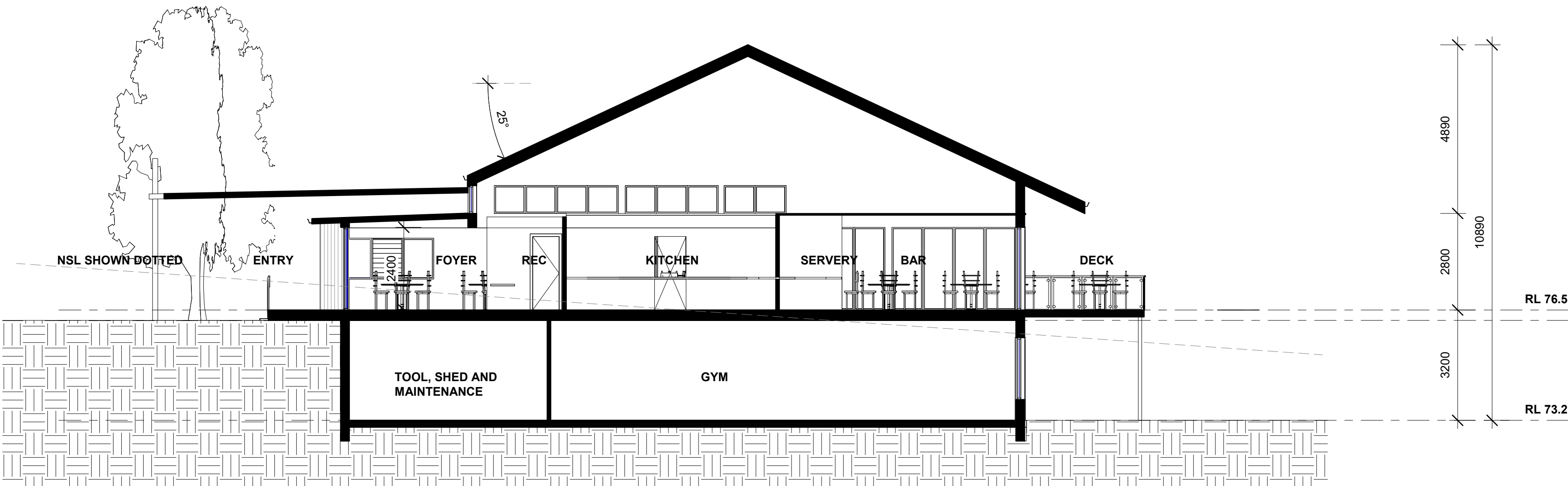
Project:
SENIORS LIVING DEVELOPMENT
LOT 1, DP 780801
WINDWARD WAY, MILTON NSW 2538

Drawing:
CLUBHOUSE SECTIONS

Scale: 1:100 @A1 Job No: 1516 Drawing No:
Date: 09.05.2017
Drawn: SJ
DA16
This drawing is copyright and must not be retained, copied or used without consent of designer.



1 SECTION 1
1 : 100



2 SECTION 2
1 : 100